

PRICE® GENESIS QUIET UNIT

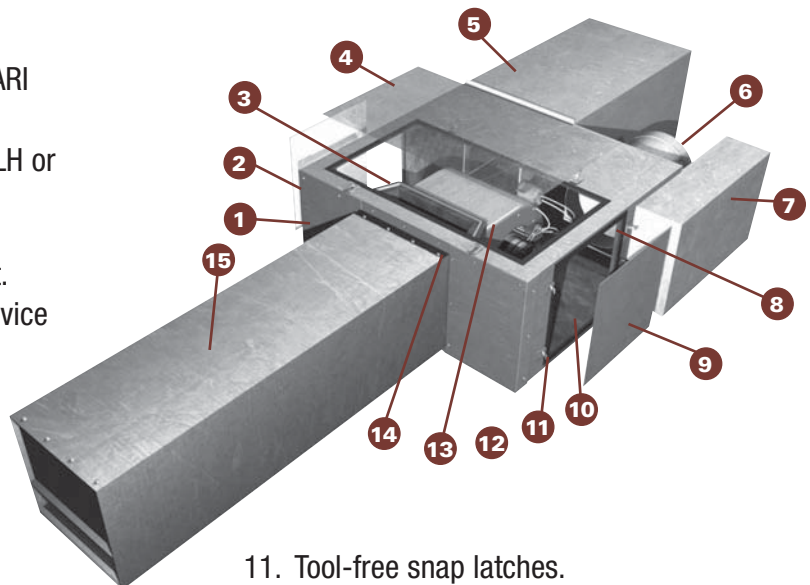
► Introducing Price Genesis “Q” series Fan Powered Terminals, the industry’s first strategically designed, fully tested, and certified Quiet Fan Powered Fan Terminal with custom designed discharge silencer. While the Price Genesis is the quietest, most durable, easily accessible, and energy efficient Fan Powered Terminal on the market, the new Price Genesis Q dramatically reduces discharge sound, eliminating the need for downstream acoustic insulation.



Features and Benefits

Quiet, reversible, accessible, energy efficient, ARI and ETL certified, loaded with options.

1. Reversible casing. Flips up side down for LH or RH configurations.
2. Heavy duty 20ga casing.
3. Unique 16ga rigid blower isolation support.
4. 4 access panels, each large enough to service motor blower assembly.
5. Integral enhanced inlet attenuator.
6. Price superior SP300 Sensor technology.
7. Single NEMA1 enclosure with fan and damper controls. One cover to access both.
8. Primary air equalization screen.
9. Gasketed access panels for quiet operation and air tight construction.
10. Thick fiberglass insulation w/variety of Price liner options.



11. Tool-free snap latches.
12. Quick connect for motor leads.
13. Energy efficient ECM motor.
14. Centered discharge.
15. Discharge silencer.



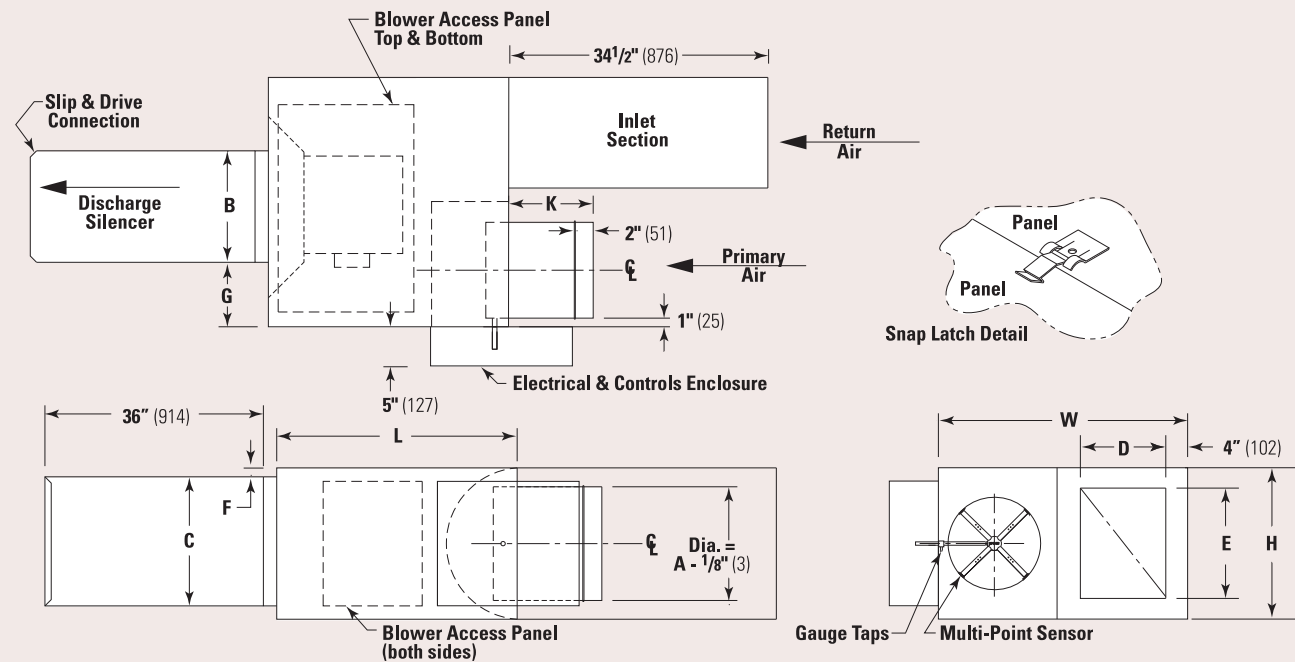
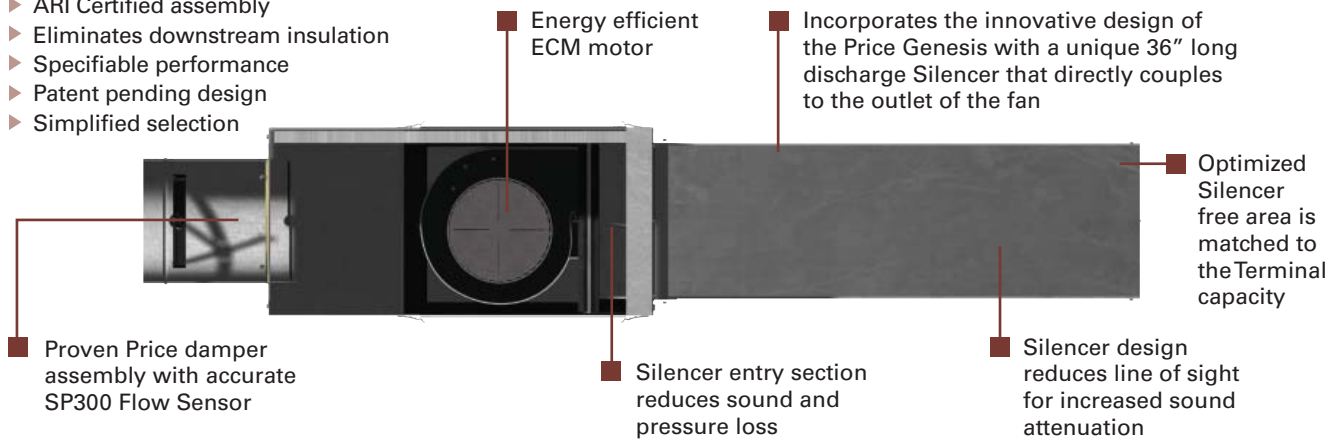
FPCGQ/FECGQ/FDCGQ Series



Features

PRICE FDCGQ - Quiet Fan Powered Genesis Unit

- ▶ ARI Certified assembly
- ▶ Eliminates downstream insulation
- ▶ Specifiable performance
- ▶ Patent pending design
- ▶ Simplified selection



Dimensional Data — Imperial (inches)/Metric (mm)

Unit Size	Maximum Fan cfm (L/s)	Primary Air Inlet A	Return Air Inlet D E	Outlet Duct Size B C	W	H	L	F	G	K
20	700 (330)	6, 8 (152, 203)	6 10 (152) (254)	12 10 (305) (254)	24 (610)	14 (356)	28 (711)	2 (51)	6 (152)	9½ (241)
30	1500 (708)	8, 10 (203, 254)	8 14 (203) (356)	14 12½ (356) (318)	28 (711)	18 (457)	32 (813)	2¾ (70)	7 (203)	9½ (241)
40	2000 (943)	10, 12 (254, 305)	10 14 (254) (356)	16 15 (406) (381)	36 (914)	18 (457)	32 (813)	1½ (38)	10 (254)	9½ (241)
50	2500 (1180)	12, 14 (305, 356)	16 16 (409) (409)	20 17½ (508) (445)	40 (1016)	20 (508)	38 (965)	1¼ (32)	10 (254)	9½, 11½ (241, 292)

FPCGQ/FECGQ/FDCGQ Series

Typical Selection Guide



Unit Size	Airflow CFM L/s		Min. ΔPs in.wg. Pa		Discharge NC ΔPs Across Unit						Radiated NC ΔPs Across Unit			
					(1)	(2)	(1)	(2)	(1)	(2)	0.5 in.w.g.	1.0 in.w.g.	1.5 in.w.g.	
					0.5 in.w.g. 125 Pa	0.5 in.w.g. 125 Pa	1.0 in.w.g. 250 Pa	1.0 in.w.g. 250 Pa	1.5 in.w.g. 375 Pa	1.5 in.w.g. 375 Pa	125 Pa	250 Pa	375 Pa	
2006	200	94	0.05	13	--	--	--	--	--	--	--	--	--	--
	300	142	0.11	27	--	--	--	--	--	--	--	--	--	23
	350	165	0.14	35	--	--	--	--	--	--	--	21	24	24
	400	189	0.18	44	--	--	--	--	--	--	--	23	25	25
2008	400	189	0.06	15	--	--	--	--	--	--	--	--	--	--
	500	236	0.09	23	--	--	--	--	--	--	--	21	22	22
	600	283	0.13	32	--	--	--	--	--	--	22	23	24	24
	700	330	0.17	43	--	--	--	--	--	--	24	25	26	26
3008	400	189	0.02	5	--	--	--	--	--	--	--	--	--	20
	500	236	0.03	8	--	--	--	--	--	--	--	20	22	22
	600	283	0.05	12	--	--	--	--	--	--	--	22	24	24
	700	330	0.07	17	--	--	--	--	--	--	20	23	25	25
	800	378	0.09	23	--	--	--	--	--	--	21	24	26	26
3010	800	378	0.06	14	--	--	--	--	--	--	21	22	23	23
	900	425	0.07	17	--	--	--	--	--	--	23	24	25	25
	1000	472	0.08	21	--	--	--	--	--	--	24	26	27	27
	1100	519	0.10	24	--	--	20	--	21	--	26	27	28	28
	1300	614	0.13	33	23	--	24	--	25	--	29	31	32	32
4010	600	283	0.03	8	--	--	--	--	--	--	--	20	22	22
	800	378	0.05	12	--	--	--	--	--	--	--	22	25	25
	1000	472	0.07	17	--	--	--	--	--	--	20	24	27	27
	1200	566	0.09	23	--	--	--	--	--	--	22	27	29	29
4012	1000	472	0.04	9	--	--	--	--	--	--	20	23	24	24
	1200	566	0.05	13	--	--	--	--	--	--	23	25	27	27
	1400	661	0.07	18	22	--	23	--	23	--	26	28	29	29
	1600	755	0.09	23	25	--	25	--	26	--	28	30	32	32
	1800	850	0.11	28	27	--	28	--	28	--	30	33	34	34
5012	1000	472	0.03	8	--	--	--	--	--	--	--	22	23	23
	1200	566	0.05	13	--	--	--	--	--	--	23	24	25	25
	1400	661	0.07	19	22	--	22	--	23	--	26	27	28	28
	1600	755	0.10	26	25	--	26	--	26	--	28	30	31	31
	1800	850	0.14	34	28	--	28	--	29	--	31	32	33	33
5014	1600	755	0.06	16	27	--	28	--	29	--	30	32	33	33
	1800	850	0.08	20	30	--	31	--	31	--	33	35	35	35
	2000	944	0.10	26	32	20	33	21	33	22	36	37	38	38
	2200	1038	0.13	31	34	22	35	23	35	24	38	39	40	40
	2400	1133	0.15	38	36	24	37	25	37	25	40	41	42	42

Performance Notes:

- NCs are derived from sound power levels, which are obtained in accordance with ARI Standard 880-98 and ASHRAE Standard 130-1996.
- Airflow is given in cubic feet per minute, CFM; and litres per second, L/s.
- Blank spaces (—) indicate NCs less than 20.
- Minimum ΔPs across Unit is the lowest inlet to discharge of the unit.
- Pressure is given in Pascals, Pa and Inches of Water Gauge, in.w.g.
- NC levels are not ARI certified.
- NC values are calculated based on typical attenuation values outlined in Appendix E, ARI Standard 885-98, "A Procedure for Estimating Occupied Space Sound Levels in the Application of Air Terminals and Air Outlets".

Radiated Sound

Total Deduction	Octave Band Mid Frequency, HZ.					
	125	250	500	1000	2000	4000
All Sizes	18	19	20	26	31	36

(1) Discharge NC is based on environmental effect, end reflection, flex duct and sound power division **w/o lined duct** per ARI 885-1998 attenuation values.

Discharge Sound

Total Deduction	Octave Band Mid Frequency, HZ.					
	125	250	500	1000	2000	4000
< 300 cfm	22	22	27	28	30	22
300 – 700 cfm	25	25	30	31	33	25
> 700 cfm	27	27	32	33	35	27

(2) Discharge NC is based on environmental effect, end reflection, flex duct and sound power division and **with lined duct** per ARI 885-1998 attenuation values.

Discharge Sound

Total Deduction	Octave Band Mid Frequency, HZ.					
	125	250	500	1000	2000	4000
< 300 cfm	24	28	39	53	59	40
300 – 700 cfm	27	29	40	51	53	39
> 700 cfm	29	30	41	51	52	39

For detailed explanation of the NC calculation refer to page F144.

FPCGQ/FECGQ/FDCGQ Series

ARI Certification Rating Points



Table 1: Discharge – ECM Motor

Unit Size	(2) Fan CFM	(3) Input Watts	(4) Min. Δ Ps Inlet	FAN ONLY (5)						
				2	3	4	5	6	7	
2006	700	200	0.14	61	52	48	44	43	39	
2008	700	200	0.17	61	52	48	44	43	39	
3008	1300	340	0.04	67	57	52	47	45	45	
3010	1300	340	0.1	67	57	52	47	45	45	
4010	1800	500	0.04	66	59	53	47	45	51	
4012	1800	500	0.07	66	59	53	47	45	51	
5012	2400	750	0.08	70	62	56	52	53	59	
5014	2400	750	0.11	70	62	56	52	53	59	



ARI Certification Notes:

- 1) Primary CFM is the standard rated air volume for the inlet size listed.
- 2) Fan CFM is maximum rated fan volume at 0.25 inches downstream static pressure.
- 3) Input Watts is the maximum electrical power input at the maximum rated fan volume.
- 4) Min. Operating Pressure Inlet is the minimum operating pressure requirement of the primary air valve at the rated primary CFM.
- 5) Fan only sound power levels are at the maximum rated fan volume.
- 6) Power levels at maximum rated fan volume and rated primary CFM at 1½" inlet static.

Table 2: Radiated – ECM Motor

Unit Size	(1) Primary CFM	(2) Fan CFM	(3) Input Watts	(4) Min. Δ Ps Inlet	(5) Fan Only							(6) 1½" Inlet Static						
					2	3	4	5	6	7	2	3	4	5	6	7		
2006	400	700	200	0.14	61	55	49	49	42	36	62	57	53	48	43	39		
2008	700	700	200	0.17	61	55	49	49	42	36	63	56	51	48	43	40		
3008	700	1300	340	0.04	62	58	53	47	42	40	64	60	55	48	43	42		
3010	1100	1300	340	0.1	62	58	53	47	42	40	66	61	56	50	45	42		
4010	1100	1800	500	0.04	66	59	56	50	45	42	68	61	56	51	45	43		
4012	1600	1800	500	0.07	66	59	56	50	45	42	68	61	56	51	46	43		
5012	1600	2400	750	0.08	72	64	58	53	50	50	72	64	58	52	50	50		
5014	2100	2400	750	0.11	72	64	58	53	50	50	75	66	59	53	51	51		



2975 Shawnee Ridge Court • Suwanee, Georgia USA 30024
Ph: 770.623.8050 • Fax: 770.623.6404

999 North Thornton Road
Casa Grande, Arizona USA 85222-3809



638 Raleigh Street • Winnipeg, Manitoba Canada R2K 3Z9
Ph: 204.669.4220 • Fax: 204.663.2715

Product Improvement is a continuing endeavor at Price. Therefore, specifications are subject to change without notice. Consult your Price sales representative for current specifications or more detailed information.

The founding principles of our company have never changed - business integrity, first class service and a commitment to people. Price manufacturing endeavours arose from our belief that we could supply superior products and services at a reasonable price. Our mission is to become the worldwide supplier of preference for air distribution products and services. You can rely on Price – our products and services – with confidence.

Warranty: The Company warrants and guarantees that all goods within this brochure that have been manufactured by the Company have been manufactured in accordance with the specifications published herein and will be free from defects in material and workmanship for a period of (12) months from the Bill of Lading issued by the Company. The Company will replace defective product at its option, but will not be responsible for labor or material charges in replacing product or consequential damages. Any installation not conforming with the Company's specifications, manuals, bulletins or instructions or any misuse or any modification not authorized by the Company voids the warranty. This warranty is in lieu of all Provincial, State, and Federal statutory warranties and the conditions herein are in substitution and replacement of which warranties, statutory or otherwise.

Your Local Price Representative:

